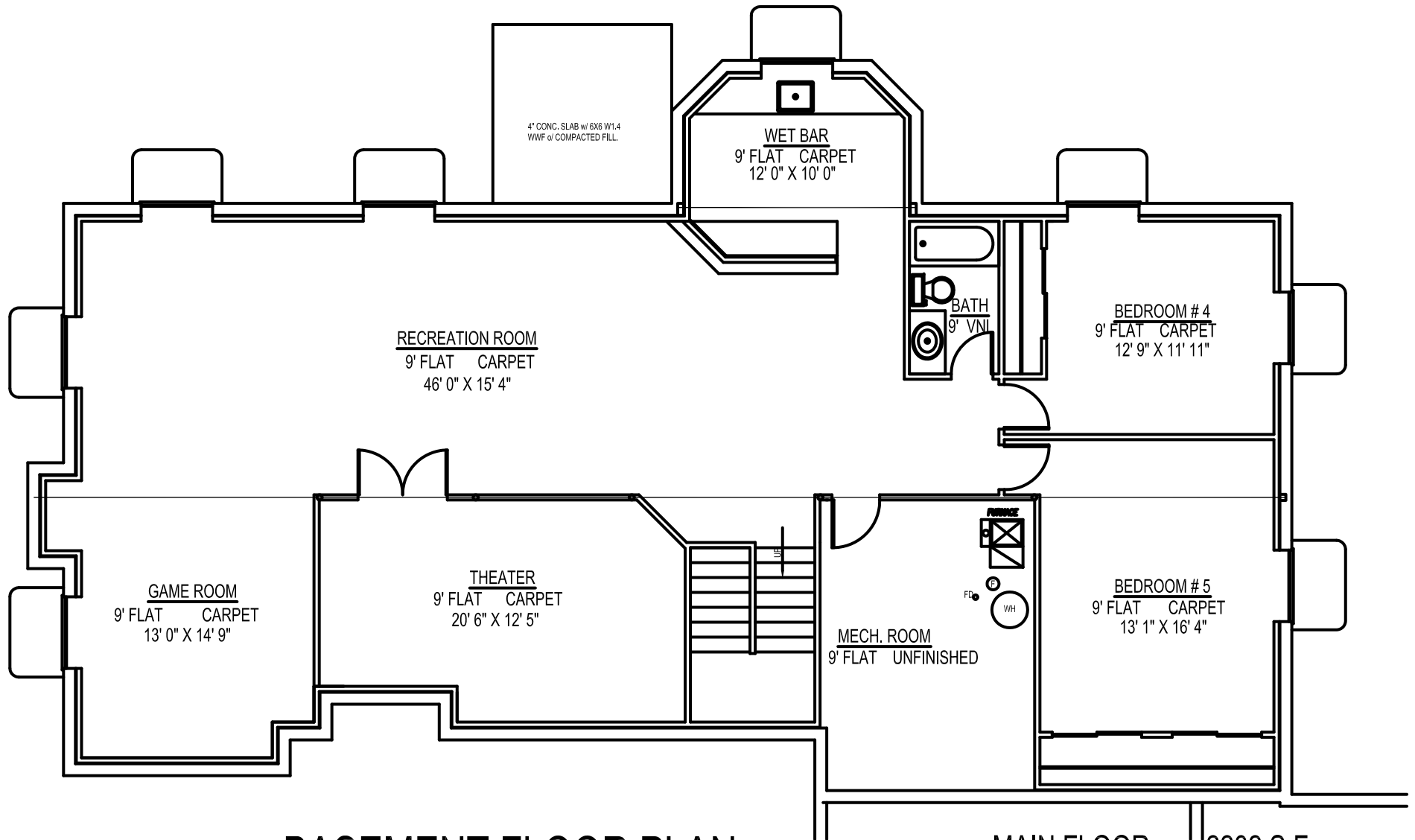


MAIN FLOOR: 2282 S.F.
 BASEMENT: 2047 S.F.
 FULL BASEMENT FINISH:: 1853 S.F.
 PARTIAL BASEMENT FINISH: 1196 S.F.
 3-CAR GARAGE: 1128 S.F.
 UTILITY GARAGE: 448 S.F.
 RV GARAGE: 742 S.F.



BASEMENT FLOOR PLAN

MAIN FLOOR:	2282 S.F.
BASEMENT:	2047 S.F.
FULL BASEMENT FINISH::	1853 S.F.
PARTIAL BASEMENT FINISH:	1196 S.F.
3-CAR GARAGE:	1128 S.F.
UTILITY GARAGE:	448 S.F.
RV GARAGE:	742 S.F.