



CC | **Signature Group**



The Marissa

Zane Whitfield

Total Sq. Ft. Under Roof - 4,956

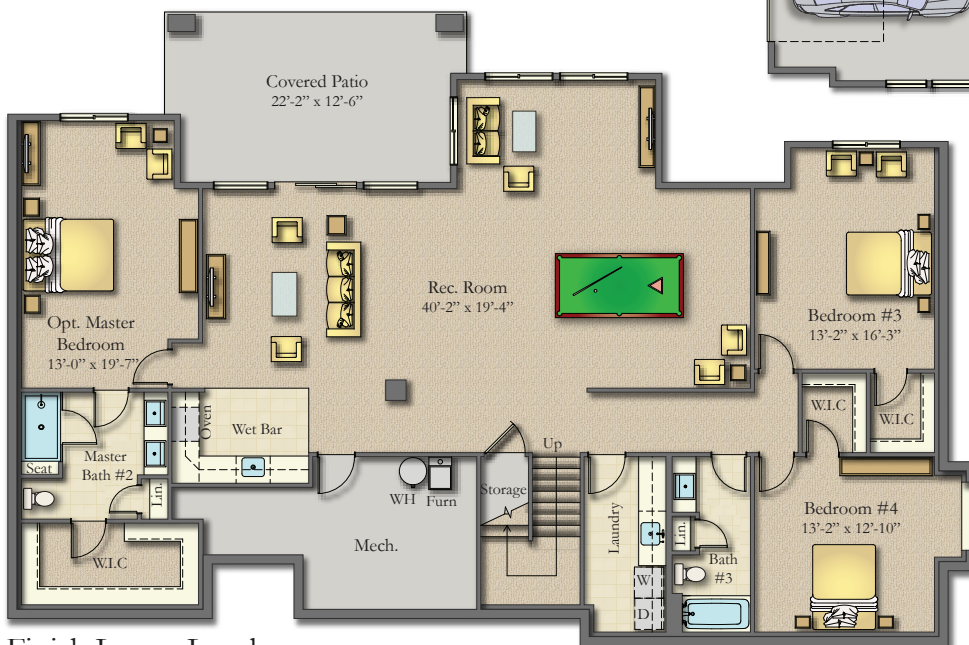
719-332-3930

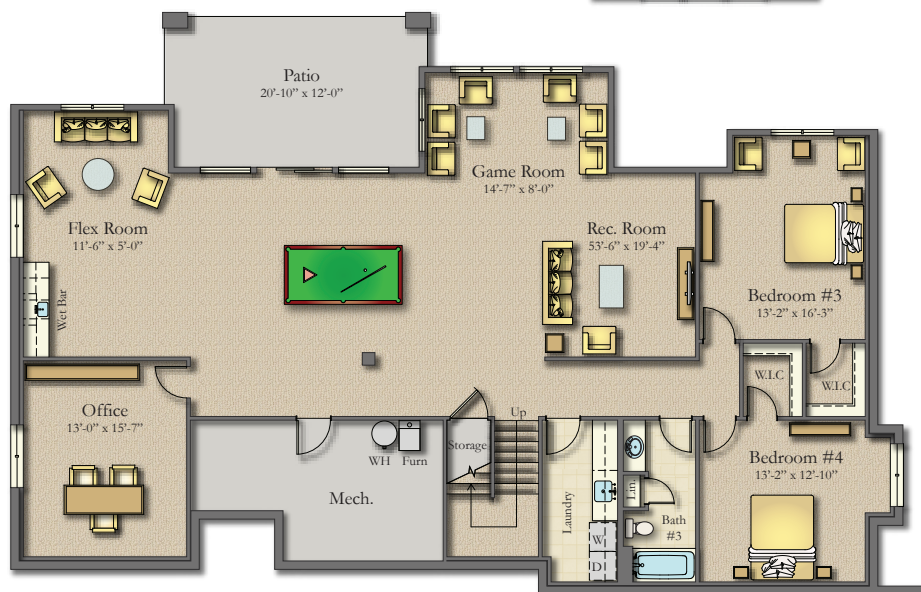
Ph. 719-495-3005



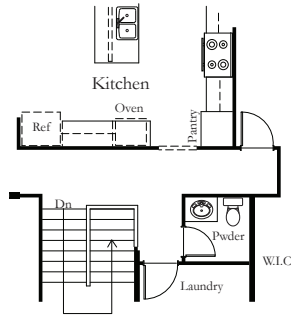
Anthony Homes or its entities reserve the right to change elevations, specifications, floor plans, window placement, materials, and prices without notice. All sq footages are approximate. The availability of certain options is subject to construction status and schedule. Option features may be predetermined and included at additional cost. Renderings are Artist's conception only.

www.homesbyanthony.com

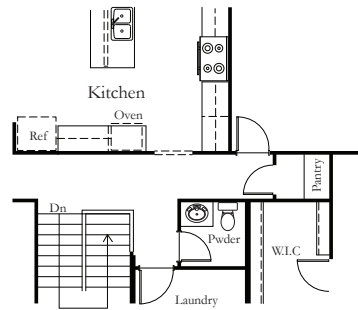




Upper Level Optional

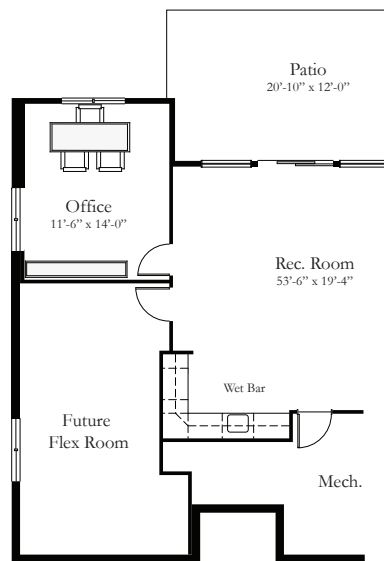


Opt. Cabinet Pantry In Kitchen



Opt. Walk-In Pantry In Hallway

Finish Lower Level Optional

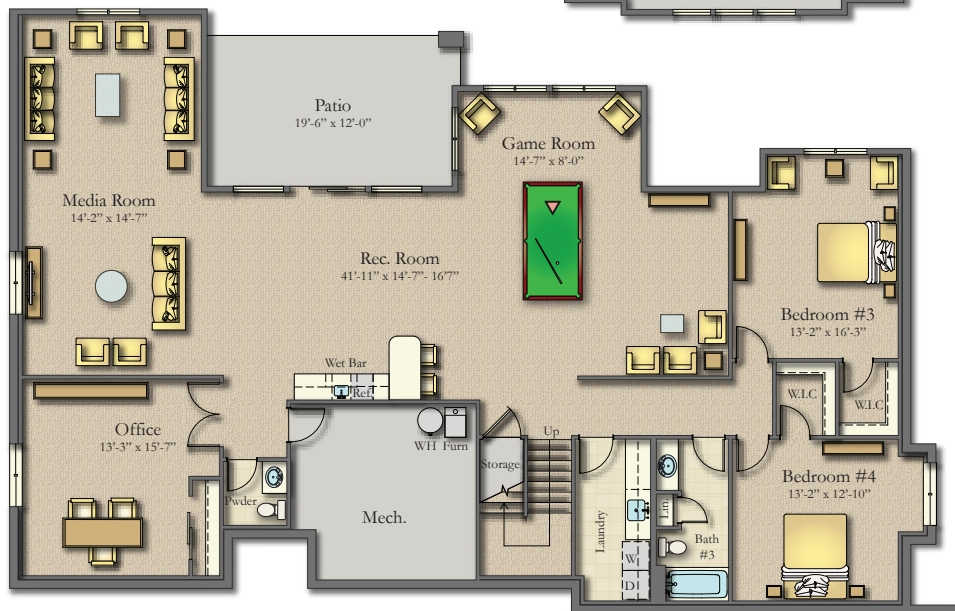


Opt. Office In Back & Wet Bar

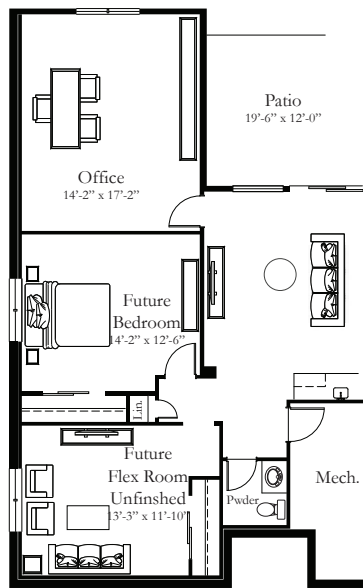




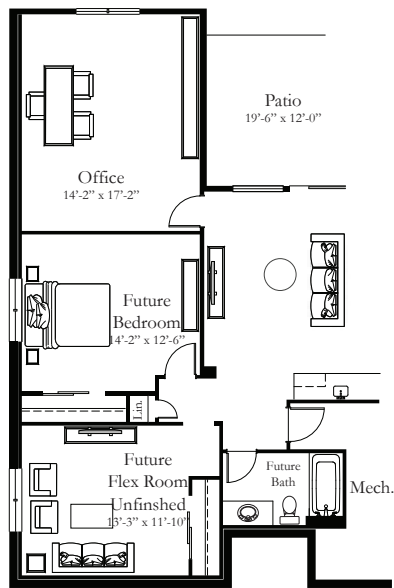
OPTIONAL 2ND MASTER
ON MAIN LEVEL, BIGGER
SQUARE FOOTAGE



Finish Lower Level Optional



Opt. Office In Front Powder Bathroom



Opt. Office In Front -2nd Full Bathroom

