

The Cortez

Total Sq. Ft. Under Roof - 3,530

Ph. 719-495-3005



CRAFTSMAN ELEVATION



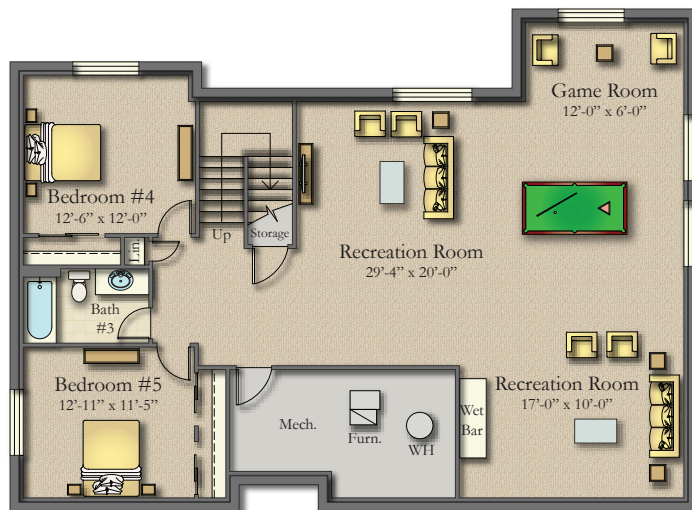
FARMHOUSE ELEVATION



Anthony Homes or its entities reserve the right to change elevations, specifications, floor plans, window placement, materials, and prices without notice. All sq footages are approximate. The availability of certain options is subject to construction status and schedule. Optional features may be predetermined and included at additional cost. Renderings are Artist's conception only.



Main Level: 1,765 Sq. Ft.



Basement

Total :1,765 Sq. Ft.

Finish :1,534 Sq. Ft.



The Cortez

Total Sq. Ft. Under Roof - 3,530

Ph. 719-495-3005



4 CAR GARAGE ELEVATION

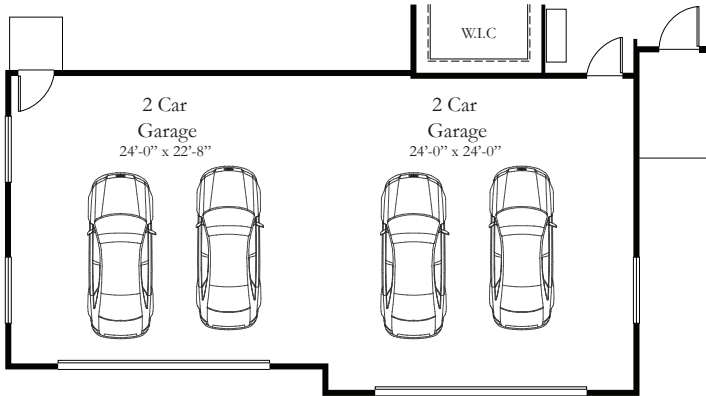


RV GARAGE ELEVATION

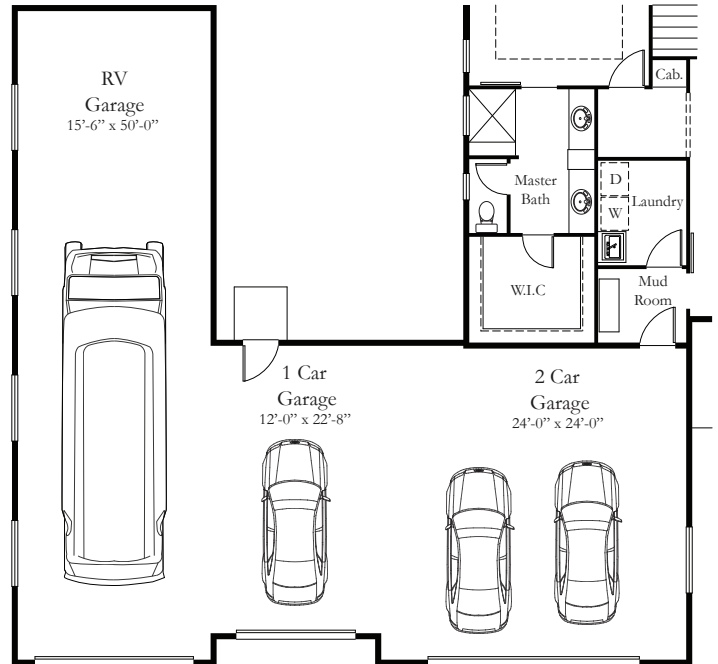


Anthony Homes or its entities reserve the right to change elevations, specifications, floor plans, window placement, materials, and prices without notice. All sq footages are approximate. The availability of certain options is subject to construction status and schedule. Optional features may be predetermined and included at additional cost. Renderings are Artist's conception only.

Garage Options

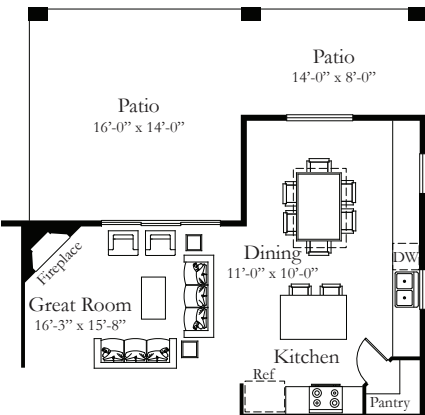


Opt. 4th Car Garage

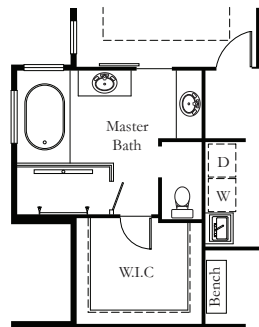


Opt. RV Garage

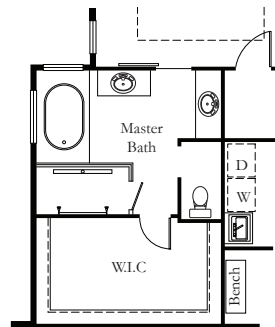
Upper Level Optional



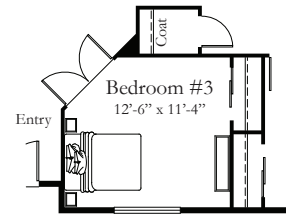
Opt. Nook Extension



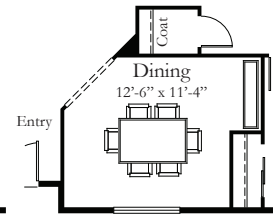
Opt. Master Bath I



Opt. Master Bath II

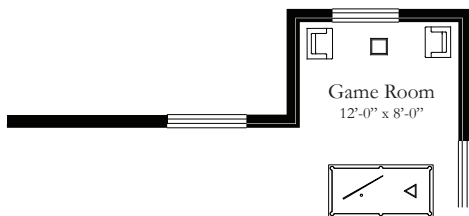


Opt. Bedroom #3

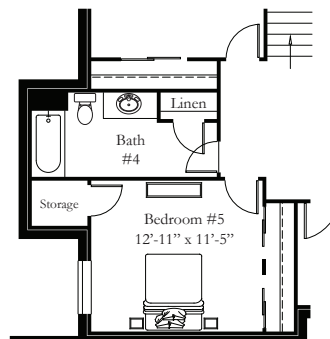


Opt. Dining

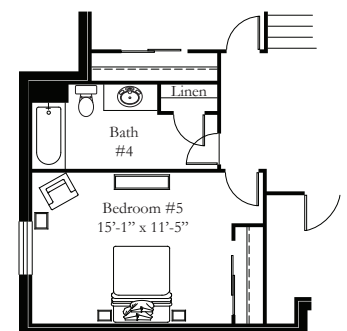
Finish Lower Level Optional



Opt. Nook Extension



Opt. Bedroom #5 With Storage



Opt. Bedroom #5

